



LET
THERE
BE **DESIGN.**

FEATURES

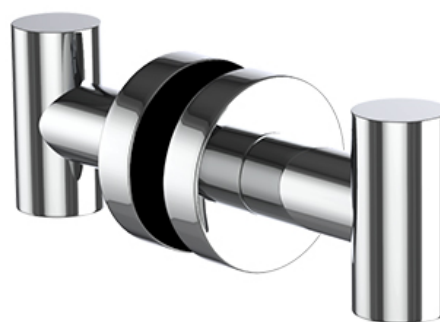
- Premium 304 Grade Stainless Steel
- Solid Mount Construction
- Concealed Installation Hardware
- Solid End Cap provided for side opposite to the door for a seamless look

Double Knob shown
with a Medium Rosette



Medium Rosette
(Dia 1 1/4")

Large Rosette
(Dia 1 1/2")



COLLECTION MASTERPIECE

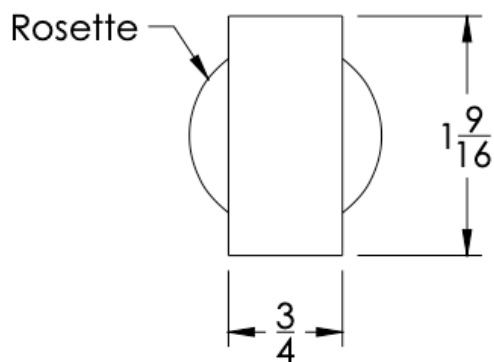
DOUBLE KNOB

Model	Product	Finishes Available
MST-KND <u>XX-XX</u>	Double Knob	Multiple finishes available. Over 23 finishes to choose from.

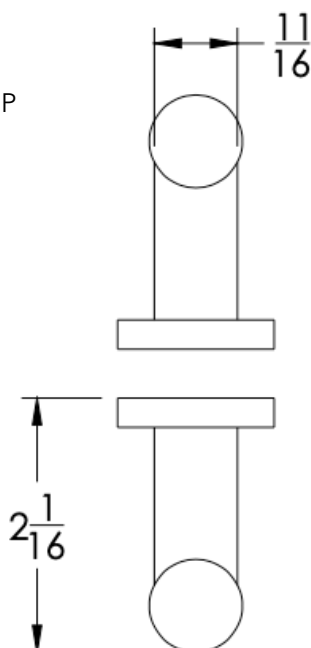
FINISHES	Polished (-P)	Antique Copper (-ACOP)	Polished Gold (-PGLD)
	Brushed (-B)	Polished Brass (-PBRs)	Brushed Copper (-BCOP)
	Brushed Gold (-BGLD)	Matte White (-WHT)	Brushed Rose Gold (-BRGD)
	Matte Black (-BLK)	Brushed Modern Bronze (-BMBRZ)	Brushed Black (-BRBLK)
	Oil Rubbed Bronze (-ORB)	Glossy White (-GWHT)	Polished Black (-PBLK)
	Brushed Brass (-BBS)	Polished Rose Gold (-PRGD)	Antique Nickel (-ANKL)
	Brushed Bronze (-BBRZ)	Unlacquered Brass (-UBRS)	Black Nickel (-NKBL)
	Antique Brass (-ABRS)	Polished Nickel (-PNKL)	

No Rosette	Medium Rosette (Dia 1 1/4")	Large Rosette (Dia 1 1/2")
MST-KND-NR	MST-KND-MR	MST-KND-LR

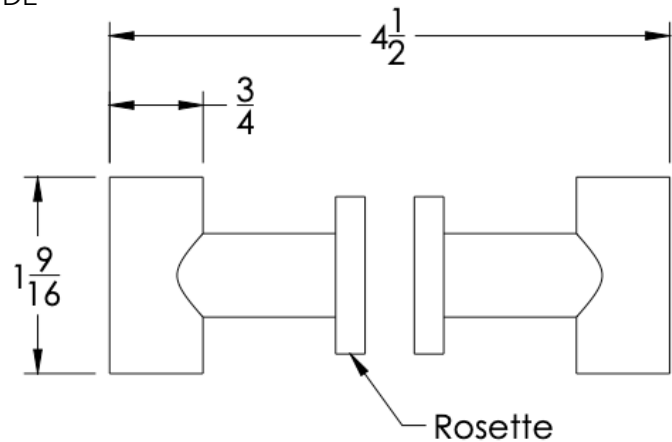
FRONT



TOP



SIDE


Medium Rosette
(Dia 1 1/4")

Large Rosette
(Dia 1 1/2")

Installation Notes: Diameter of glass hole for installation is as follows:

- For Medium Rosette(-MR) and Large Rosette (-LR) the hole diameter is 1/2"
- For No Rosette (-NR) the hole diameter is 5/16"

Standard hardware supplied can accommodate glass thicknesses 1/4" to 1/2". Please contact us for custom hardware in case glass thickness exceeds 1/2".

Dimensions in inches

NOTE: Dimensions subject to change without notice.